



ELEGANT

## The beauty of the curve

---



## The beauty of the curve

---

















## Simple & Elegant

ELEGANT obtains both functionality and beauty. The appearance is simple and stylish. The curved structure brings you the feeling of elegance and light. Combined with the suspended backrest, it brings ELEGANT a unique identification feature. The curvature of the elastic mesh backrest supports sacrum steadily, allowing your spine to maintain a natural "S" shape, forming a strong and comfortable support for your spine.







## Fit in various spaces

ELEGANT's offers 2 color options for backrest frames and 3 color options for mesh which makes ELEGANT integrated in any space easily . Whether it's for office, conference room or home, ELEGANT's exquisite and elegant design with simple style could create a free and relaxing atmosphere for you.

## Healthy sitting, stable support

ELEGANT obtains excellent ergonomic performance and high durability.

The backrest naturally fits the three ergonomic areas-the sacrum, thoracic spine and scapula with adaption to the body micro-motion.

When you sit down, your weight is distributed evenly on the chair which can reduce your stress and encourage you to exercise which are the keys to maintain healthy blood circulation and concentration.





## Comfortable support

The armrests are important element of the chair. ELEGANT adopts an aerodynamic structure with a simple and stylish appearance. It has a soft PU cover, which can be adjusted up and down, forward and backward, and left and right which can easily provide perfect support for your arms.



Up & Down



Forward&Backward



Left & Right





Rotate 1 time in any direction to complete back tilt locking position

## Easy to Adjust

The newly developed mechanism can achieve 4 locking positions to meet the needs of different tilting. You only need to turn the knob next to the seat (in any direction) to easily switch between work and rest mode.



**Seat height adjustment**

The adjustable stroke of the lever under the seat is 465mm-535mm



**Back tilt tension adjustment**

Rotate the lever to adjust the back tilt tension



# More options

---

## Backrest frame



Dark blue



White

## Base



Black plastic base



White plastic base

## Mechanism



Synchro mechanism

4 locking positions, 22° back tilt,

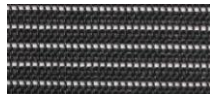
## Backrest mesh



FB2503 white

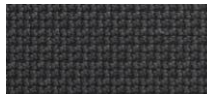


FB2502 Grey



FB2501 Black

## Seat fabric



FC3201 Dark grey



FC3202 Grey



### 3D Armrests

With up and down, forward and backward, left and right adjustments, it can easily provide perfect support for your arms.

### Synchro mechanism

4 locking positions, , 22° back tilt, , Easy to switch between work and rest mode ( Simple mechanism is available )

### Plastic base

Stable structure, strong bearing load

### Elastic & Breathable mesh

High elastic mesh, light and breathable, provide the best support for user's back

### S Shape backrest

Ergonomic design that fits the curve of user's spine which provides a strong and comfortable support for your spine

### Class 3 gas lift

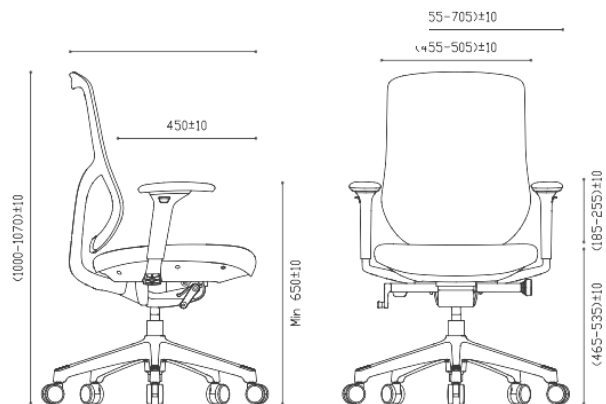
Effective stroke 70mm to fit various height users

### PU casters

Anti-slippery and quiet, floor friendly, BIFMA standard



## Dimensions



## CONTACT US

Veikou Ave. & 8 Evias Str.  
Galatsi P.O.11147  
Athens - GREECE  
T: +30 210 6642693

[www.anatomiko.gr](http://www.anatomiko.gr)



[anatomiko.gr](http://anatomiko.gr)