

THE NEW WAY
TO WORK

CHALLENGE



Trend

Open working space

Flexible / Open

With the development of digitization and changes in work tasks, office space requires a high level of flexibility. According to survey, the proportion of non-fixed working desk and co-working offices are increasing every year.

Experience / Networking

With the growth of post-80s and 90s into new corporate managers, under the background of different social material and spiritual pursuits, they have more cognition and demand for an office environment that highlights individuality and vitality. The office space needs to pay more attention to the functions, social interaction, and stimulating creativity without reducing productivity



Post-epidemic time

Focus on experience, cost saving and efficiency improvement

Health

More focus on healthier life and work style

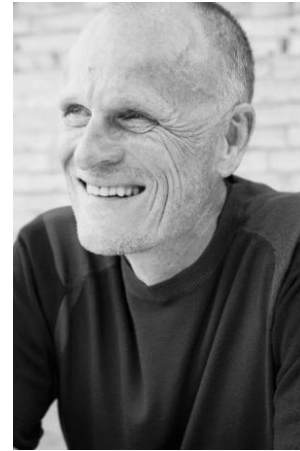
Cost efficient

Considering the malleability of furniture, the office space of the same area could offer different capacities through different combinations of furniture.

Networking

Despite the rapid development of digital office tools, people still desire to feel connected. The epidemic has made people once again aware of the relationship between people and space.

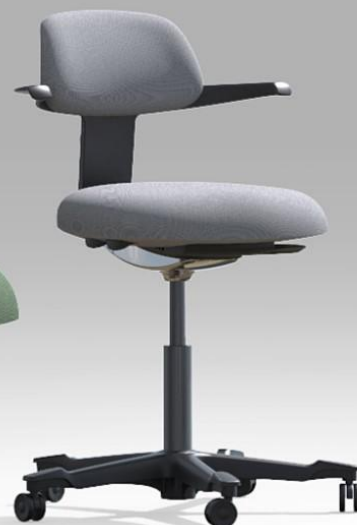




Design by:
Hans Thyge Raunkjaer

Hans Thyge & Co design studio was founded in 1990 by Hans Thyge Raunkjaer. The studio specialises in designing furniture, objects, interiors and branding. The studio has a long history of know-how and experience working with a variety of materials and production methods for clients worldwide. Hans Thyge & Co consists of passionate designers with bold ideas and a love for beautiful design. The studio believes that every design should tell a story of creativity, tradition, vision, culture and values. Throughout the years, the studio has received several awards in the international design scene.

“Creativity is the variety of impressions, which are combined with memories and associations, and filtered through the individual view,”





Anywhere & Anybody

CHALLENGE - New Ergonomic Chair is a new innovative ergonomic chair. The armrest is integrated in the backrest and folded up from the even surface that holds the backrest upholstery. They almost give the chair a humorous character surrounding the sitting person.

It is a chair for the modern spaces and with its innovative ergonomic features it is creating better health for the user and more joy for the eye.

The chair is small and vibrant and will visually take up less space in the environment. With its innovative design and clear simple style, it will create a good working spirit.



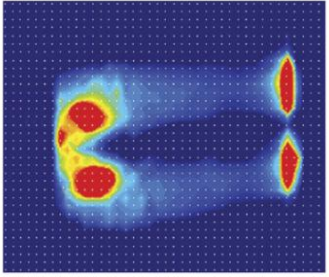
Anywhere & Anybody



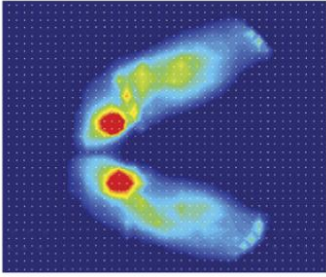
Fit for everyone

The flexible adjustment function makes it easy for you to switch between different sitting positions, sitting, standing or leaning to rest. Replacing the traditional sedentary office with moderate exercise is also the best way to relieve office fatigue, it also improves interpersonal communication, promote creative collaboration, help employees perform better.

- 2° Seat forward leaning angle
- 60mm Seat sliding
- 60mm Backrest height adjustment
- 8° back tilt



Traditional office chair
pressure heat map



New Ergonomic Chair
pressure heat map

Balance and relaxation

CHALLENGE is a light ergonomic office chair to use in normal sitting positions and sitting high with open angle between upper body and legs to provoke better blood circulation and right S-curve on back spine.

All scientific research shows that open angle between legs and backrest creates more blood flow in the body and less pressure on the spine in the lower section, which is the two most dangerous consequences sitting for long hours.





Always the right fit

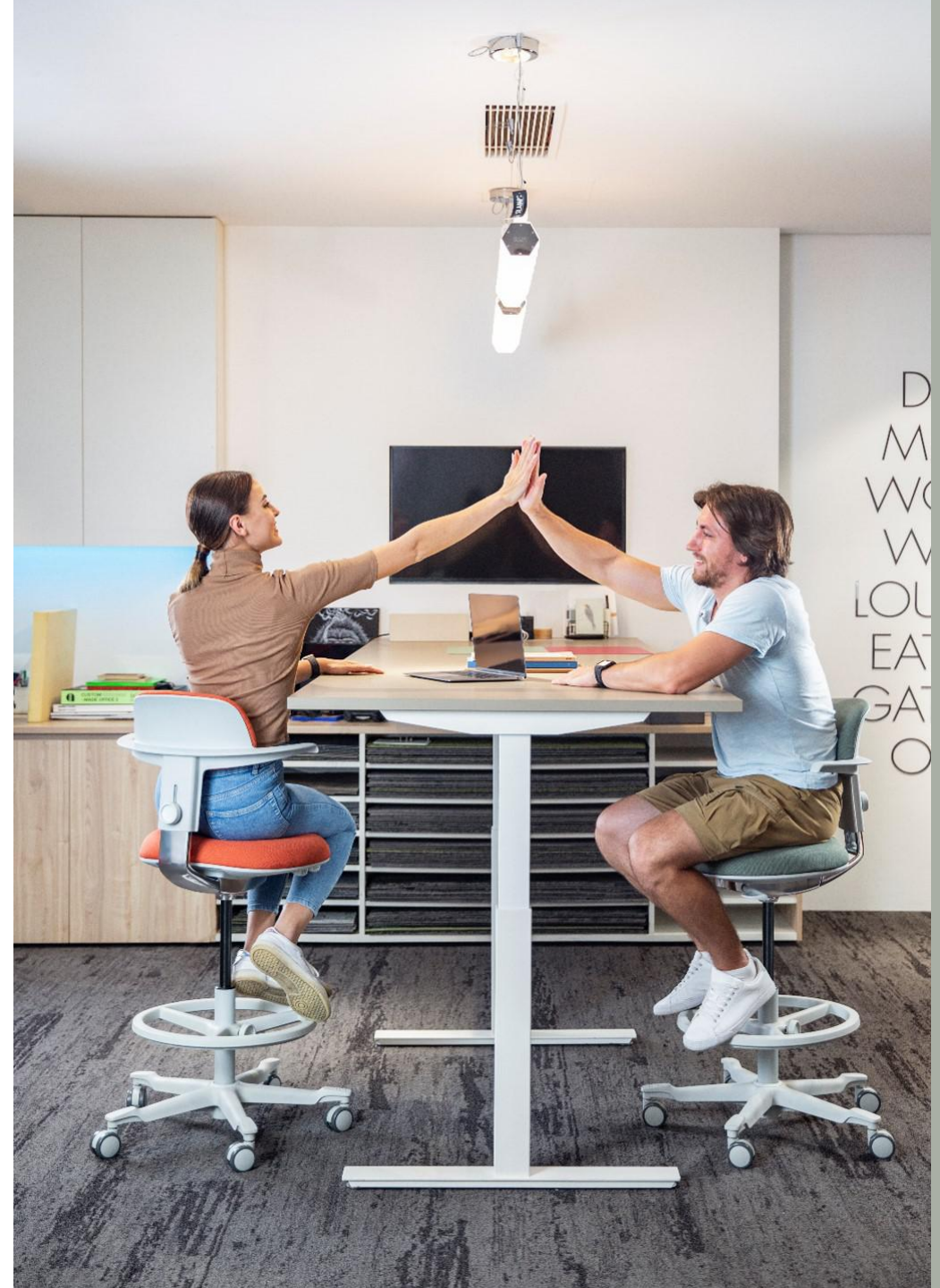


Always the right fit

CHALLENGE chair has a very simple Nordic design. The integrated armrests make the user feel safe when sitting high. The armrests also serve as handles so that the chair is easily dragged around as we in modern office environments often changes position.

Create inspiration

The unique chair shape with multiple color choices add the vitality to the workplace and it could build a collaboration space at any time. This flexibility makes it ideal for creative meeting rooms, collaboration areas, and work stations. CHALLENGE chair allows you to turn around to face your coworker while sitting on it with comfort.



Create inspiration





Concentration



Interaction





SCRIPT SCENARIO 1

↳ ENTER

CAR PULLS UP

CUT TO.....

DOOR OPENS CENTER LEFT

MAN EXITS

QF: $a = \begin{pmatrix} 5 \\ 6 \\ 1 \end{pmatrix}$
 $x = \frac{-6}{2.5} \pm \frac{\sqrt{36 - 4 \cdot 5 \cdot 1}}{2.5}$
 $x = \frac{-6}{10} \pm \frac{\sqrt{16}}{10}$
 $x = \frac{-6 \pm 4}{10}$





Home office

The chair is small and vibrant and will visually take up less space in the environment. A variety of colors and fabric could adapt to different home environments which create a good working spirit at home.





Mozart – Fine fabric

CHALLENGE chair adopts the Mozart series from Gabriel, the world's leading furniture fabric supplier. The four colors of this material give you a strong visual experience ranging from quiet to fresh to athletic vitality. Mozart has good performance, including good elasticity, excellent durability, natural fire resistance and environmental friendly. The fabric is 100% renewable polyester, which does not contain any heavy metals, fully meeting the relevant high standards of the European Union.



Gabriel®

European furniture fabric brand



Design details

- Simple design structure- The integrated armrests .
- The anti-slip design of the chair base provides stable support for your feet.

Height adjustable backrest

CHALLENGE has height adjustable backrest with stroke distance of 60mm to create lumbar support for back spine in correct S-curve by rotating the knob at the back.

Tilt

For higher comfort the CHALLENGE chair has an integrated tilt mechanism, where seat and backrest gently tilt backwards reach to 8°. This provokes a more dynamic and varied seating profile. The tilt can be locked if wanted.

Forward leaning angle

The seat has an innovative mechanism with the possibility of a forward leaning 2° angle, which guarantees the user has the right sitting angle when sitting high. The angle is activated with a handle in a split second.

Seat slide

The seat slide with sliding distance of 60mm allows users with different measures to sit comfortable in the chair.



More options

CHALLENGE - New ergonomic chair with its unique design, it provides various sitting positions and better support for semi-standing work. All CHALLENGE's performance encourages you to work in a healthier way with freedom with each sitting position offers you great comfort .

Version



Task chair Bar chair

Frame



Black White

Bases



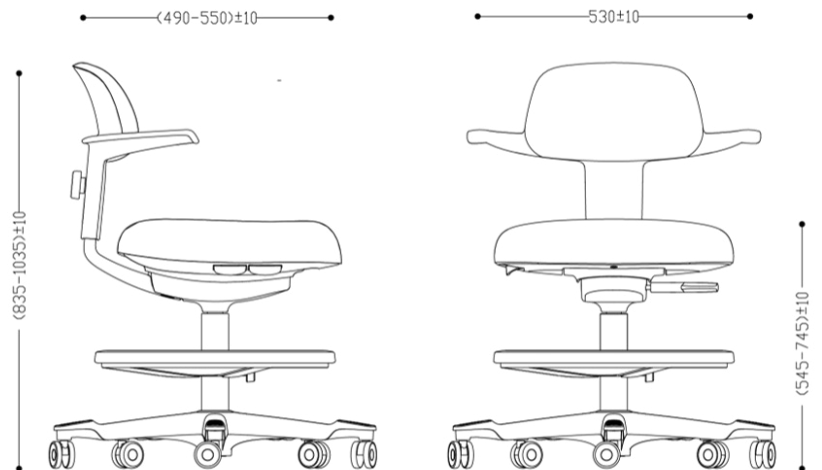
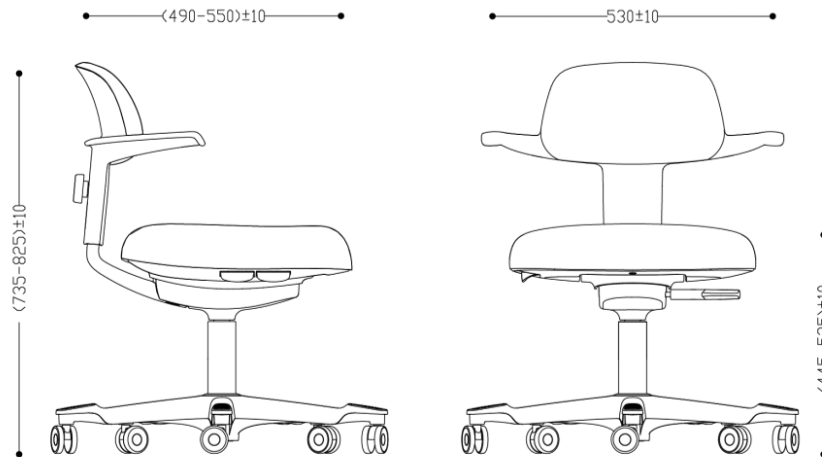
Black task chair base White bar chair base Black bar chair base

Colours



FC3102 Light grey FC3101 Green FC3104 Orange FC3103 Dark grey

Dimensions



CONTACT US

Veikou Ave. & 8 Evias Str.
Galatsi P.O.11147
Athens - GREECE
T: +30 210 6642693

www.anatomiko.gr


anatomiko.gr